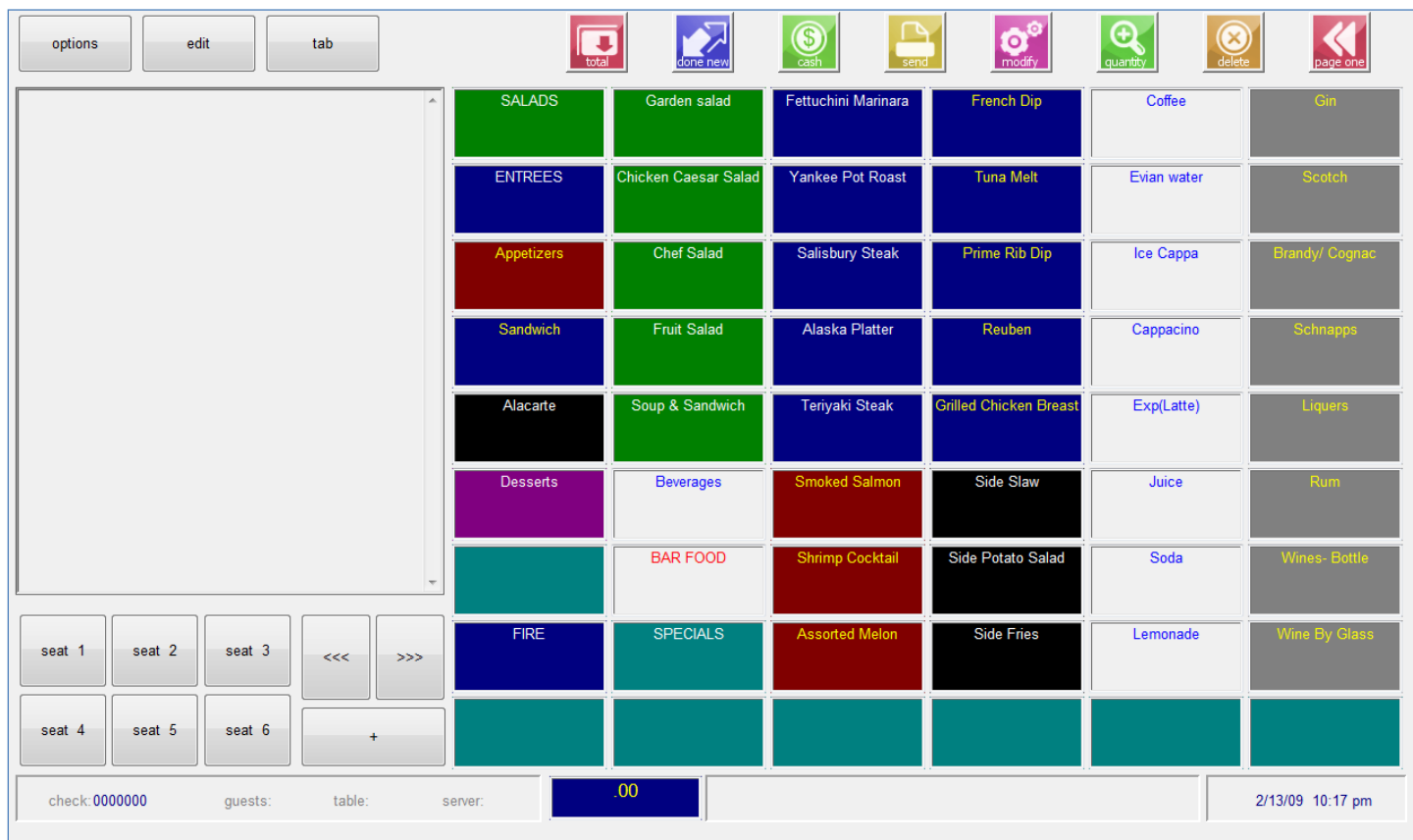


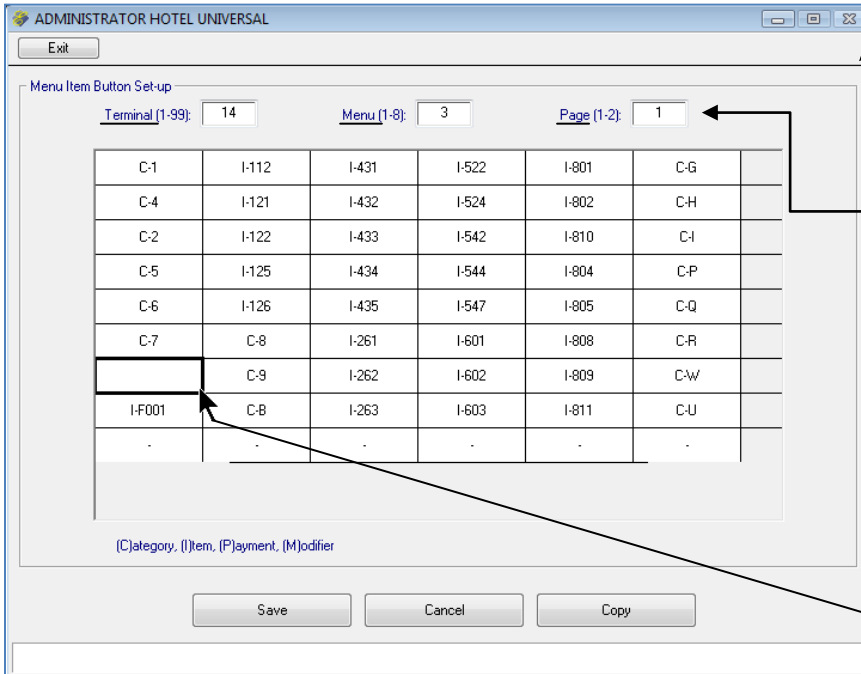
Setting up your keyboard (item entry screen) is easy.



This is the screen from which you select menu items to add to a guest check or retail ticket. After you've set up your categories, modifiers, and menu items, you're ready to configure your keyboard, also called the item entry screen. The example above includes menu categories (such as SALADS) and menu items (such as COFFEE). These are what the server selects when entering items on a check or ticket. Color coding (done in the category or item setup) helps you find items easily and stay oriented.

From POS Administrator select #15 Item Button (Keyboard) Set-up.





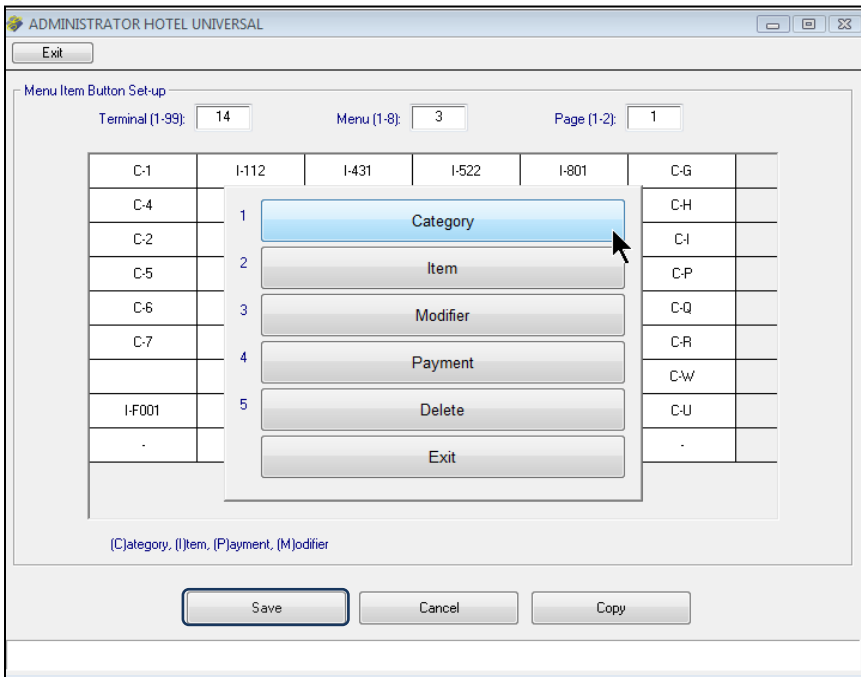
This is the Item Button/Keyboard setup screen. Each square in the grid represents an item button or square on the POS menu selection screen.

Each POS terminal will have a Terminal number. Each Terminal's Menu Item Buttons must be set up. You can have up to 8 menus per menu item. Each Menu must be set up. Set up each Page. Each menu can have 1 or 2 pages

Each terminal can have a main and an alternate menu for each time range. Each needs to be set up in the Terminal Record.

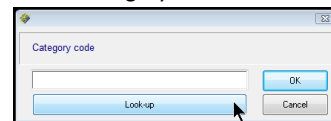
You can place a category, item, payment, or modifier on the screen. In this example, the top left square reads **C-1** represents Category 1. In the second square on the top line, you see **I-112**, representing Item 112.

To begin, click the square where you'd like to add a category, menu item, payment, or modifier.

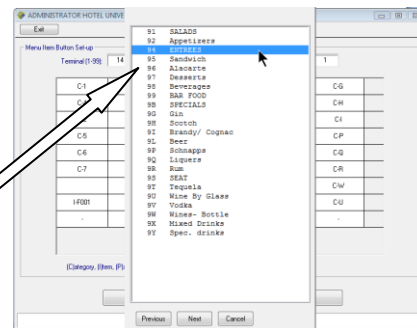
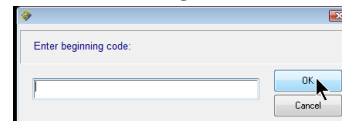


This example illustrates setting up a category button.

Select 1 – Category to place a category on the page. Enter a category code or click "Look-up".



Enter the beginning code or click OK to look up all.



Click or use your keyboard's down-arrow (↓) to select the category you want.

Click Save to save the page.

You will use this same procedure to place an item, payment, or modifier.



Continue until you have completed the menu item buttons for this terminal, menu, and page. You can then exit the setup screen and POS Administrator, log into POS, and go to the new ticket/item selection screen to see what you did.

Now you can copy the terminal/menu/page to another terminal/menu/page. Click **Copy**.

ADMINISTRATOR HOTEL UNIVERSAL

Exit

Menu Item Button Set-up

Terminal (1-99): 14      Menu (1-8): 3      Page (1-2): 1

C-1	I-112	I-431	I-522	I-801	C-G	
C-4	I-121	I-432	I-524	I-802	C-H	
C-2	I-122	I-433	I-542	I-810	C-I	
C-5	I-125	I-434	I-544	I-804	C-P	
C-6	I-126	I-435	I-547	I-805	C-Q	
C-7	C-8	I-261	I-601	I-808	C-R	
C-4	C-9	I-262	I-602	I-809	C-W	
I-F001	C-8	I-263	I-603	I-811	C-U	
.	.	.	.	.	.	

(C)ategory, (I)tem, (P)ayment, (M)odifier

Save      Cancel      Copy

At each prompt enter the appropriate information - terminal, menu (or select all menus) and page to copy from or to.

Copy from Terminal:

Copy to Terminal:

Copy from Menu:  
Press <Enter> for all menus.

Copy to Menu:

Copy from Page:

Copy to Page:

ADMINISTRATOR HOTEL UNIVERSAL

Copy from:  
terminal 14 to 16  
menu 3 to 3  
page 1 to 1?

Yes      No

If the information is correct, answer Yes to continue.

Execu/Tech

Keyboard copied.

OK



Helpful information:

Exit

Enter Item Code: 434

EXISTING ITEM

1. Item description: Alaska Platter

2. Kitchen description:

3. (P)rod(S)erv(M)emo: P

4. Item Taxable?: YNNN

5. Item cost: .00

6. Department code: F

7. Remote printer(s): 11 0 0 0

8. Modifier sets (0-Z): Z

9. Auto mod window?: Y

10. Kitchen dept (1-90): 2

11. Cooking time (min): 0

12. Cover item? (Y/N): Y

13. Allow discount?:

14. Inventory #:

15. Item in 86 List?:

16. Exclude from tips?:

21. Menu 1 Price: .00 (A/M):

22. Menu 2 Price: .00 (A/M):

23. Menu 3 Price: 11.95 (A/M): A

24. Menu 4 Price: .00 (A/M):

25. Menu 5 Price: .00 (A/M):

26. Menu 6 Price: .00 (A/M):

27. Menu 7 Price: .00 (A/M):

28. Menu 8 Price: .00 (A/M):

31. Category: 4

32. Category:

33. Category:

34. Category:

41. Touch Button color: 0

Buttons: Yes, Cancel, Delete, Another, Notes

Each active menu item is assigned to at least one menu. In the example at your left, the item, Alaska Platter, will display only on Menu3. It will not be available on any other menu unless a Menu \* Price and A is entered for that menu. For Open items, leave the price blank and enter M instead of A. A will assign the price Automatically. M will prompt you for a Manually entered price. Each item that you wish to display on the Order Entry Screen must have an A or M for the desired menu. Any A item must have a price.

If you place Category 4 on the menu item button setup for Menu 3, this item will display when that category is selected. If you place this item (434) on the menu item button screen, this item will display on that screen for this menu.

The button color on the item selection screen will be the color selected for the category or item.

Exit

Terminal: 1

EXISTING RECORD

Description: SERVER STATION

Printer: 1

Terminal type: 5

Keyboard type: T

Customer display: 0

Terminal location:

Print time on each line of check?:

Allow 'open cash drawer'?: Y

Print check when closed to cash?: N

Inventory location/ company:

'Next check' terminals (fast food only): 0 0 0 0 0

Start Time	End Time	Shift	Menu	Alt Menu	Sun?	Mon?	Tue?	Wed?	Thu?	Fri?	Sat?
00.00	1100	1	2	1	N	Y	Y	Y	Y	Y	Y
00.00	1300	1	7	7	Y	N	N	N	N	N	N
1100	1700	2	4	5	N	Y	Y	Y	Y	Y	Y
1300	1700	2	4	5	Y	N	N	N	N	N	N
1700	2400	3	3	4	Y	Y	Y	Y	Y	Y	Y
00.00	00.00	0	0								

Redirect remote printers from-to: 0 0 0 0 0 0 0 0 0 0

Default table section: 2

Print check when Done/New?:

Special tool bar button:

Buttons: OK, Cancel, Delete, Copy

'reorder'

The terminal record determines which menu displays at what time for each POS terminal. All 24 hours should be covered even if the restaurant is only open for 18 hours. Look at the first two lines in the grid. Both are for breakfast. However, the first line is for Monday through Saturday and ends at 11:00 am. The second line is for Sunday only and ends at 1:00 pm. This terminal uses Menus 1, 2, 3, 4, 5, and 7 at various times. All must be set up in the keyboard setup (menu item button setup) in order to display on the server workstation. (Three shifts are designated in this grid. This allows for shift reports. However, if you prefer to keep everything as Shift 1, the system will operate fine. This has no effect on your menu item availability.) The Menu you select will be the menu that displays at this terminal during the time and days selected. The Alt Menu is the alternate menu for that time. The alternate menu is selected in the Order entry screen through Edit > Change Menu. In the keyboard setup (menu item button setup) each menu must be entered for each applicable terminal in order to display for the designated terminal.

Additional information is available on our [User Guides website](#).

